

Coil ■ Sheet ■ Plate ■ Bars ■ Shapes ■ Tubing
Slitting □ Precision Blanking □ Stretcher Leveling □ Shearing □ Sawing



FLAT-ROLLED PRODUCTS & SERVICES

Hot-Rolled ■ Hot-Rolled Pickled & Oiled ■ Structural Quality
High Strength-Low Alloy ■ Galvanized ■ Galvannealed
Aluminized ■ Cold-Rolled ■ Prepainted Steel
Aluminum ■ Stainless Steel



Panel-Flat that Stays Flat

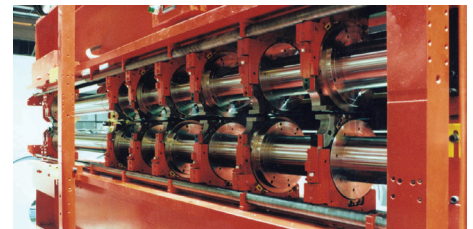


The Dependability Difference®
Complete Inventory. Right-the-First-Time Quality.
On-Time Delivery. Competitive Pricing.

Fast, Accurate, and Dependable Slitting Services



Our new, high speed looping pit slitter from Red Bud Industries, Inc.



On-Time Delivery of Highest Quality, Right-The-First-Time Slit Coil.

Count on High Steel Service Center for fast and accurate turnaround of the highest quality slit coil from the industry's newest, fastest and most accurate high speed slitter. This 60"-wide looping pit slitter from Red Bud Industries,® Inc. – the steel processing equipment innovator – delivers speed and accuracy unlike any other machine in the market.

Fast, Computerized Set-up and Processing:

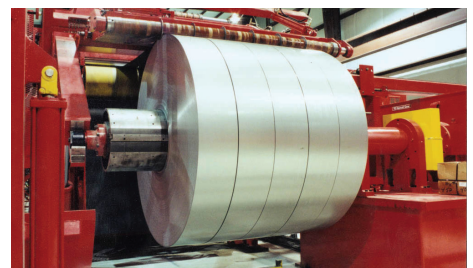
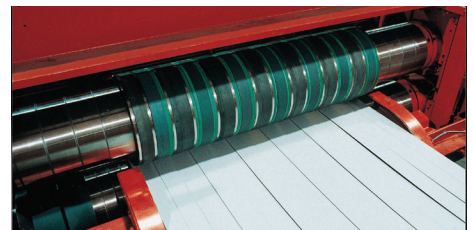
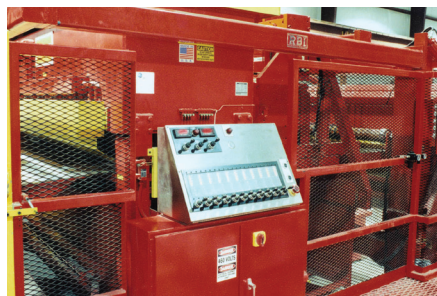
Your orders are processed faster thanks to a computer-controlled digital positioning system which enables set-up in less than 10 minutes.

State-of-the-Art Technology for Dependable Quality:

Reduced slitter stress helps improve your product quality, while Camber Trac eliminates slitting-induced camber and ensures parallel edges.

Improved Edges with Better Finishes – Slit to Your Exact Specifications:

Our new Red Bud slitter's speed and accuracy enables Right-the-First-Time quality and on-time delivery you expect from High – of full or less-than-truckload orders. That's "The Dependability Difference."



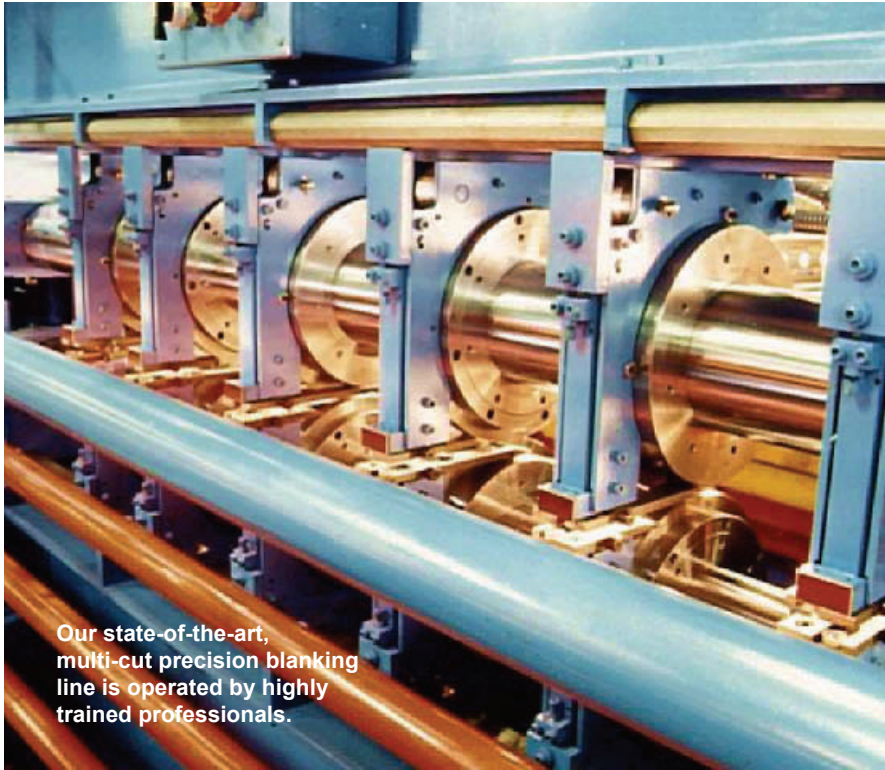
High-Speed Slitter Capacity

Gauge:
 Minimum Thickness:..... .015"
 Maximum Thickness:..... .250"

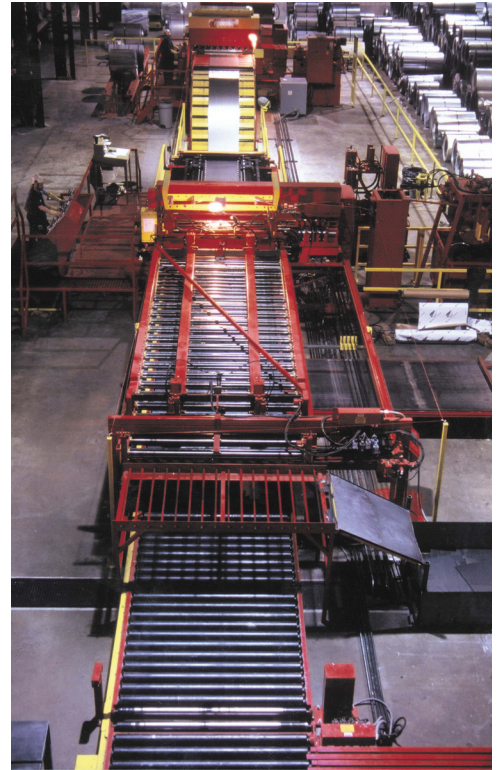
Slit Coil:
 Minimum Width:..... 1.0"
 Maximum Width:..... 60.0"

Width Tolerance:..... + or - .005 standard

Highest Quality Precision Blanks To Your Specs



Our state-of-the-art, multi-cut precision blanking line is operated by highly trained professionals.



Precise Tolerances, Dependable Quality and JIT Delivery.

JIT turnaround of Right-the-First-Time quality products can be critical to your success in today's competitive environment. High Steel Service Center's high speed, precision multi-cut blanking line provides precision blanks that meet your exact specifications and delivery requirements.

3-in-1 Machine Enables Just-In-Time Turnaround:

This time saver levels, slits and cuts to length all in one operation. Our higher production rates help provide close tolerance parts economically.

Precise Product Helps Your Bottom Line:

With tolerances as close as + or - .005", our state-of-the-art precision multi-cut blanking line helps eliminate your in-house processing – and reduces capital investment.

Right-the-First Time Quality:

Count on High to provide the top quality you need for your surface-critical operations – with advanced leveling capabilities for optimum flatness.



- 200,000 s.f. facility
- 150,000 ton plant capacity



Precision Multi-Cut Blanking Line Capacity

Gauge:
 Min. Thickness:015"
 Max. Thickness:135"

Blank Size:
 Min. Width: 3.0"
 Max. Width: 72.0"
 Min. Length: 10.0"
 Max. Length: 144.0"

Tolerances:
 Width: + or - .005 achievable
 Length: + or - .005 achievable
 Squareness:015"
 Diagonal:030"

Superior Cut-to-Length Leveling Services



Count on High for Right-the-first-Time leveling and cut-to-length services.



Highest Quality with JIT Speed and Less-than-Truckload Capability

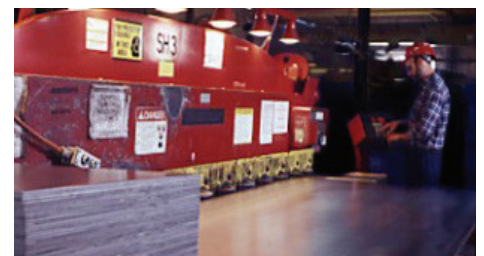
Our cut-to-length line provides the flatness and close tolerances you need to help your manufacturing operation run smoothly. You can order custom widths and lengths to minimize scrap and in-house processing costs. And you can take advantage of High Steel Service Center's automated handling equipment and four CNC programmable shears – which can shear material up to 1/4" thick.

Complete Inventory – Ready for Processing:

- Hot-Rolled
- Hot-Rolled Pickled & Oiled
- Structural Quality
- High Strength-Low Alloy
- Galvanized
- Galvannealed
- Aluminized
- Cold-Rolled
- Prepainted Steel
- Aluminum
- Stainless Steel

Cut-To-Length Leveling Line Capacity

<u>Gauge:</u>	
Min. Thickness:.....	.050"
Max. Thickness:.....	.250"
<u>Sheet Size:</u>	
Min. Width:.....	9.50"
Max. Width:.....	72.0"
Min. Length:.....	23.0"
Max. Length:.....	540.0"



Sheet Shearing:

Min. Thickness:.....	.015"
Max. Thickness:.....	.250"
Min. Width:.....	2.0"
Max. Width:.....	72.0"
Min. Length:.....	2.0"
Max. Length:.....	144.0"



Call for a tour of our state-of-the-art facility to find out how **The Dependability Difference** can work for you!



400 Steel Way ■ Lancaster, PA 17601
 800.732.0346 ■ fax 717.299.5155
highsteelservicecenter.com